

**GORCHYMYN TRAFFORDD YR M4  
(CYFFORDD 23 (MAN I'R DWYRAIN O FAGWYR)  
I FAN I'R GORLLEWIN O GYFFORDD 29  
(CAS-BACH) A FFYRDD CYSYLLTU) A  
THRAFFORDD YR M48 (FFORDD GYSYLLTU  
CYFFORDD 23 (MAN I'R DWYRAIN O FAGWYR))  
A CHEFNFFORDD LLUNDAIN I ABERGWAUN  
(MAN I'R DWYRAIN O FAGWYR I GAS-BACH)  
(FFYRDD YMYL) (ATODOL) 201-**

Nid yw'r cynlluniau yma yn dangos lled na  
manylion lluniadol

GRADDDFA'R CYNLLUN SAFLE 1:2500

UNEDAU HYD:

1 MEDR = ODDEUTU 1.094 LLATH

1 CILOMEDR = ODDEUTU 0.621 MILLTIR

**THE M4 MOTORWAY (JUNCTION 23  
(EAST OF MAGOR) TO WEST OF  
JUNCTION 29 (CASTLETON) AND  
CONNECTING ROADS) AND THE  
M48 MOTORWAY (JUNCTION 23 (EAST OF  
MAGOR) CONNECTING ROAD) AND THE  
LONDON TO FISHGUARD TRUNK ROAD  
(EAST OF MAGOR TO CASTLETON)  
(SUPPLEMENTARY) (SIDE ROADS)  
ORDER 201-**

These plans do not show widths or constructional  
details

SITE PLAN SCALE 1:2500

UNITS OF LENGTH

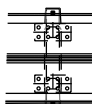
1 METRE = 1.094 YARDS APPROX

1 KILOMETRE = 0.621 MILES APPROX

**ALLWEDD**

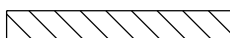
**KEY**

Llwybr y brif ffordd arbennig newydd ar draphont



Route of new main special road on viaduct

Mynedfa breifat newydd



New private means of access

Mynedfa breifat i'w chau



Private means of access to be  
stopped up

Cofrestrriad Cynlluniau  
Plans Registry

Rhif. HA14/1 WG16  
No. HA14/1 WG16

Dyddiad: 20 Ebrill 2017  
Date: 20 April 2017

Llofnodwyd ar ran Gweinidogion Cymru  
Signed on behalf of the Welsh Ministers

Ar yr / On the

Pennaeth yr Uned Fusnes,  
Rheoli'r Rhwydwaith  
Llywodraeth Cymru

Head of Business Unit,  
Network Management  
Welsh Government